



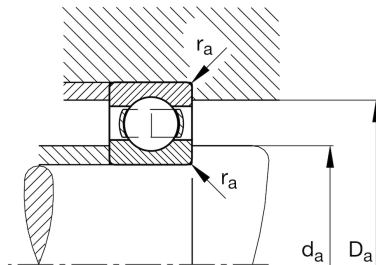
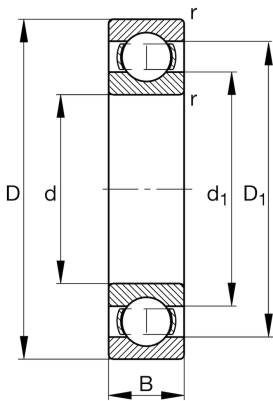
FAG

627

Deep groove ball bearing

Schaeffler ID:  
0383910150000Deep groove ball bearing 62, single row,  
steel sheet metal cage

## Technical information



## Main Dimensions &amp; Performance Data

d	7 mm	Bore diameter
D	22 mm	Outside diameter
B	7 mm	Width
$C_r$	3,297 N	Basic dynamic load rating, radial
$C_{0r}$	1,368 N	Basic static load rating, radial
$C_{ur}$	74 N	Fatigue load limit, radial
$n_G$	47,000 1/min	Limiting speed
$n_{gr}$	28,000 1/min	Reference speed
	0.013 kg	Weight

## Dimensions

$r_{min}$	0.3 mm	Minimum chamfer dimension
$D_1$	18 mm	Shoulder diameter outer ring
$d_1$	12.14 mm	Shoulder diameter inner ring

## Mounting dimensions

$d_{a min}$	9.4 mm	Minimum diameter shaft shoulder
$D_{a max}$	19.6 mm	Maximum diameter of housing shoulder
$r_{a max}$	0.3 mm	Maximum fillet radius

## Calculation factors

$f_0$	12.4	Calculation factor
-------	------	--------------------

## Temperature range

$T_{min}$	-30 °C	Operating temperature min.
$T_{max}$	120 °C	Operating temperature max.